

INFRASTRUCTURE ASSESSMENT AUDIT FOR SUVA – NAUSORI URBAN SCHOOL

PT. VISHNU DEO MEMORIAL PRIMARY SCHOOL (2379) SUMMARY REPORT



TABLE OF CONTENTS

1)	INSPECTION SUMMARY	3
2)	ASSESSMENT OF OVERCROWDING	4
3)	EXISTING INFRASTRUCTURE CONDITIONS	5
4)	WATER SANITATION HYGIENE (WASH) FACILITIES	7
5)	DISASTER RESILIENCE ASSESSMENT	8
6)	ACCESSIBILITY ASSESSMENT	9
7)	SUMMARY OF FINDINGS.....	10
8)	RECOMMENDATIONS	11
9)	COMPLIANCE.....	11
10)	APPENDIX.....	11

1) INSPECTION SUMMARY

School Inspection Summary	
School name:	PT. VISHNU DEO MEMORIAL PRIMARY SCHOOL
Overall condition state:	FAIR
Key recommendations:	
<ul style="list-style-type: none"> • Overcrowding – new reinforced concrete structure with four new classrooms required. • WASH – one new ablution block to have four water closets with two shower cubicles complete with two hand basins for Boys and four water closets with two showers cubicles complete with two hand basins for Girls • Accessibility – wheel chair ramps required at corridor & classroom access and new disable toilet cubicle. • Safety – new security fence line and new set of fire extinguishers and fire hose reel. 	
Comments:	
Major defects were noted as follows: <ul style="list-style-type: none"> • Damaged chain link fence for playground. • Roof leak to Admin office and visible moisture damage to admin office ceiling. 	
Aerial view of school	General view of school
	 <p>ACCESS FROM GRANTHAM ROAD</p>  <p>SAFETY SIGNS</p>  <p>KINDI PLAY GROUND FENCED</p>

School type:	Primary	✓	Secondary		Year levels	ECE,1,2,3,4,5,6,7,8
School address:	P.O.Box 5153, RAIWAQA.					
School enrolment and staff figures (2024)	No. of Students (Male)	No. of Students (Female)	No. of Students with Disability	No. of Teachers (Male)	No. of Teachers (Female)	
	303	258	0	2	12	
School building arrangement	TOTAL NUMBER OF BUILDINGS: 2 BLOCKS BLOCK 01 – 2 LEVELS, BLOCK 02 – 2 LEVELS					
Local Government area:	GRANTHAM ROAD, RAIWAQA.					
Date of inspection:	06 TH JUNE, 2024					
Inspection team:	ALEKSIO MANOA FREDDY TURAQA SURAJ RAGHUNATH					
Data collection methods	Visual inspection		✓	Onsite measurement		✓
	Interviews with school staff		✓	Drone / aerial imagery		✓
	Survey form		✓	Desktop research		✓
	Other:					
Assumptions:	NONE					
Limitations:	SURVEY PLAN / TITLE CERTIFICATE - WITH SCHOOL BOARD AS BUILT PLANS EXISTING STRUCTURES – WITH SCHOOL BOARD SCHOOL BUDGET PLAN – WITH SCHOOL BOARD ABOVE DOCUMENTS NOT KEPT AT SCHOOL OFFICE.					

2) ASSESSMENT OF OVERCROWDING

An assessment for overcrowding was undertaken based on FNBC standards and 2024 enrolment data. The table below summarises the data collected through visual inspection and interrogation of enrolment data and compares this against the FNBC standard student to classroom size ratio of 2 m² per student.

The results of the assessment are based on the recommended sizing (1.5m²), according to 2024 data, an additional 7 classrooms are required across each year levels 02,03, 04, 05, 06, 07 and 08 for Pt. Vishnu Deo Memorial Primary School.

Year	Stream	Number of students	Current number of classrooms	Number of extra classrooms required based on FNBC on 2024 data
01	101	32	2	0
	102	32		
02	201	46	1	1
03	301	33	2	1
	302	32		
04	401	44	1	1
05	501	43	2	1
	502	44		
06	601	44	2	1
	602	43		
07	701	39	2	1
	702	39		
08	801	46	2	1
	802	44		
ECE		45	1	
TOTAL		606	15	7

3) EXISTING INFRASTRUCTURE CONDITIONS

Given the outlined procedure, the following observations were made:

Block Code	Length (m)	Width (m)	Height (m)	No. of Levels	Type	Room List
BLOCK 01	50	10.5	6.2	2	Block 01 constructed out of concrete beams and columns with slab on ground and suspended floor slab for first floor. Block walls for external load bearing and folding timber partition walls. Doors and windows present on lengthwise of the structure. Gable roof with metal cladding and timber framed roof members.	Ground Floor 6no. Classrooms, Canteen back of stairway. First Floor 6no. Classrooms, Storage room above Canteen.
BLOCK 02	20	15	6.2	2	Block 02 constructed out of concrete beams and columns with slab on ground and suspended floor slab for first floor. Block walls for both external & internal load bearing. Doors and windows present on all sides of the structure. Gable roof with metal cladding and timber framed roof members.	Ground Floor ECE room, Library, 1no. Classroom, Girls Toilet, Boys Toilet, 1no. Teacher Female WC cubicle, 1no. Teacher Male WC cubicle. First Floor Office Admin, Staffroom, Sick Bay, 1no. Culture room, 1no. Classroom, 1no. General Staff WC Cubicle.

NOTE: Girls and Boys Toilets mentioned refers to a set of cubicles. Refer Breakdown under Section 4.

Summary Table for Classrooms

This table provides a quick overview of the assessment findings, helping to identify areas that need immediate attention and those that are in good condition. The following criteria was used:

Good	- No additional works / intervention required
Fair	- Remedial works required
Poor	- Demolition and replace with new

Assessment Area	Criteria	Conditions
Structural Integrity	Walls, ceiling, floor, foundation and roofs	Good
General upkeep	Exterior, interior, furniture and fixtures	Good
Safety compliance	Fire safety, electrical safety,	Fair
Disability	Accessibility	-
Ventilation and lighting	Ventilations, Natural Lighting, Artificial Lighting.	Good

Observations on Structural Elements

- **Wall and Ceiling** – Block walls for ground and first floor for both Blocks 01 and 02 no signs of crack. All perimeter block wall external and internal faces are plaster and paint finish. Block 01 classrooms on both first and ground floor have timber folding partition walls. Section of Block 02 admin office ceiling moisture damage exist. Offices, classrooms and corridor on first floor for both blocks have flat ceilings fixed to underside of roof framing. Ceiling integrity in good condition and paint finish.
- **Floor and Foundation** – Blocks 01 and 02 no signs of ground settlement. All offices, classrooms and toilets for both Blocks 01 and 02 have tiled floor. Corridor floor paint finish.
- **Roof** – No major issue reported by school management with roof cladding for both Blocks 01 and 02 besides existing roof leak over the admin office. No access to view roof framing and tie down connections.
- **Window & Door** – Windows on first and ground floor for both Blocks 01 and 02 have complete set of clear glass louver blades on aluminium frames. All windows have security mesh cover. Each classroom for Block 01 has timber framed swing double door access from front and back corridor. Block 02 offices, classrooms and toilets have timber framed swing single access doors. All doors in good condition.
- **Earthquake** – Rigid structure with beams and columns. Staircase both ends of each Block.
- **Cyclone** – Roof framing tie down connections concealed.

Safety and compliance with standards

- **Fire Safety** – No fire extinguishers and no fire hose reel present for both Blocks 01 and 02 corridors. The school management have provided Emergency exit plan and designated assembly. First aid kit and fire extinguisher available with admin office. Announcements and alerts conveyed through PA sound system that covers whole school.
- **Electrical Safety** – School electricity connected to EFL mains along Grantham road. Safe and secured switchboard with circuit breakers located away from student reach. Accessed only by School admin. All lighting and power supply wiring concealed in conduits and inside ceiling space.
- **Accessibility** – Classrooms and toilet cubicles are not user friendly for disable students. There is no disable student enrolled in school. The toilets are shared with Junior and Senior grade students. One WC cubicle allocated for ECE students with a raised concrete block placed in front of toilet seat.

Lighting and Ventilation

- **Ventilation** – doors and windows present lengthwise of both Blocks 01 & 02. No fan, No air con.
- **Natural Lighting** – adequate number of windows for all classrooms and offices.
- **Artificial Lighting** – adequate number and correct size ceiling light fittings. All functioning properly.

4) WATER SANITATION HYGIENE (WASH) FACILITIES

Condition of Toilets and Washrooms

The only toilet facility for students is located at the end of ground floor in Block 02. The facilities have some minor defects such as:

- For both Girls and Boys toilet shower heads provided inside of WC cubicle. No separate shower cubicle.
- For both Girls and Boys some cubicle doors to have locking device readjusted or replaced.
- Toilet seats are at standard height. Not well-suited for ECE and Junior grade students.

All flush systems for both Girls and Boys toilet and teacher's toilet functioning properly and kept safe and clean by management. Cubicle floor and walls provided with tiles and regularly cleaned.

The school's existing WASH facility ratio to students based on requirements under FNBC and current student roll does not comply to standards. School management prepared a strategy to stagger recess and lunch times for different grades to avoid overcrowding at toilets and taps. Classrooms on first floor for both Blocks 01 and 02 have wash buckets and encourage students to have water bottles since all taps are located on ground floor.

The toilets and taps are being shared amongst the Junior and Senior grade students and as well as early childhood learning students. Table below indicates the existing number of water closet cubicles and hand wash points;

TOILET CUBICLE(S)		No. of Cubicles		Toilet Ratio (1 cubicle: students)		Compliance of Student to Toilet Cubicle Ratio (FNBC).	
Building Index	Used by Years	Female (WC)	Male (WC)	Female Students	Male Students	Female Requirement (1:20) Extra WC?	Male Requirement (1:30) Extra WC?
BLOCK 01	-	-	-	-	-	-	-
BLOCK 02	YEARS 01 TO 08, ECE	11	4	1:24	1:75	4	4

HAND BASINS IN THE TOILET		No. of Hand Basins		Handbasin Ratio (1 HB: students)		Compliance of Student to Hand Basin Ratio (FNBC).	
Building Index	Used by Years	Female	Male	Female Students	Male Students	Female Requirement (1:60) Extra Handbasins?	Male Requirement (1:60) Extra Handbasins?
BLOCK 01	-	-	-	-	-	-	-
BLOCK 02	YEARS 01 TO 08, ECE	2	2	1:130	1:150	2	2

GENERAL OUTDOOR TAPS		No. of General Outdoor Taps	Outdoor Taps Ratio (1 tap: students)	Compliance of Student to Outdoor Taps Ratio Requirement (1:60) (FNBC) Does it require additional hand basins?
Building Index	Used by Years			
BLOCK 01	YR 06, 07, 08	5	1:50	0
BLOCK 02	YR 01, 02, 03, 04, 05, ECE	11	1:35	0

5) DISASTER RESILIENCE ASSESSMENT

This infrastructure condition assessment aims to evaluate the architectural, structural, and non-structural features of the school to ensure it is resilient to natural disasters and provides a safe learning environment for students. The assessment also identifies areas for improvement and highlights the measures already in place to enhance overall resilience. FNBC 1990 and basic loading, wind and seismic AS/NZS codes typical details were utilized during and after inspection.

Architectural

- Layout: Every classroom except for ECE room have two exit points. Large floor space classrooms with large openings for windows and good ceiling height. Each classroom has ceiling mounted 4no. 4 feet light frames. No missing tube lights. Toilets located on ground floor at end of Block 02.
- Central Location: The school is centrally located, allowing easy access to main streets and relief services.

Structural

- Material Quality: The school buildings were constructed in Year 1970 with reinforced concrete and block walls and metal cladding over timber roof framing. Partial extension to Block 02 was constructed in Year 2006. Well maintained by School management.
- Structural Integrity: Buildings have demonstrated the capability to withstand and recover from natural disasters like earthquakes, category 3 cyclones, and floods. Roof framing members and tie down connections concealed.

Non-Structural

- Disaster Preparedness: Implementation of disaster evacuation plans, emergency exit routes, and safety protocols.
- Fire Safety: School is not equipped with a fire alarm system and has no fire extinguishers to mitigate fire-related risks.

6) ACCESSIBILITY ASSESSMENT

I. Compliance with Accessibility Standards:

- Educational facilities did not meet accessibility standards, such as the Fiji Disable People Federation Access Audit Tool 1.0. This toolkit covers aspects like ramps, door widths, signage, and accessible routes, also the noncompliance extends beyond physical structures to digital accessibility.

II. Facilities for Students with Disabilities:

- Classrooms did not have adjustable seating arrangements, clear sightlines, and adequate space for mobility aids also including accessible desks and adjustable podiums.
- Laboratories are not able to accommodate students with various disabilities with the absence of adjustable lab benches, accessible sinks, and clear pathways.
- Libraries require accessible shelving, reading stations, and assistive technology (such as screen readers) to enhance library usability.
- Restrooms (WASH facilities) were not wheelchair-accessible or have grab bars and sinks at an appropriate height.
- Common Areas: the cafeterias and outdoor spaces were not designed inclusively. Benches, seating areas, and a few pathways are not able to accommodate everyone.

III. Access to Classrooms, WASH Facilities, and Common Areas:

- Classrooms do have wide doorways but no ramps to ensure unobstructed access to classrooms. Additionally, acoustics are not considered for students with hearing impairments.
- WASH Facilities do not have accessible restrooms. There is clear pathway to the wash facilities with wide corridor but no grab railings. There is step down into both Girls and Boys toilet.
- Common areas like corridors, courtyards, and gathering spaces are not barrier-free and are without proper lighting and contrasting floor materials to aid navigation.

7) SUMMARY OF FINDINGS

The following summarizes the individual characteristics assessed during the Suva-Nausori school audit for Pt. Vishnu Deo Memorial Primary School at Grantham Road Raiwaqa:

Categories of Assessment	Existing Condition / State	Required as per Standards	Gaps Observed
Existing Infrastructure Condition	Structural Integrity Columns, slabs, beams, rafters, purlins of adequate size. General upkeep Overall safe and clean classrooms and compound. No major defects. Safety compliance Handrails to first floor corridor and steps in good condition. Safety signs provided in corridor and steps. Disability No consideration when constructed in Year 1970. Ventilation and lighting Adequate number and size of windows and lighting of classrooms. Ceiling fan provided for ECE room.	Structural Integrity Columns, slabs, beams, rafters, purlins sizes to follow FNBC 1990. General upkeep Routine check as per MOE policies with major defects requiring immediate intervention. Safety compliance Handrails, extra doors and signage where necessary. Disability To comply with FDPF Disability audit tool Ventilation and lighting Adequate windows and doors required as per FNBC 1990.	Structural Integrity Roof framing tie down connections to be checked & assessed. General upkeep Paint roof cladding to prolong durability and clean gutters. Add roof screws where required. Safety compliance Security fence needs to be redone proper. Disability Not fully compliant with FDPF Disability audit tool Ventilation and lighting Wall vent fan required for both Girls and Boys toilet blocks.
Assessment of Overcrowding	Most classrooms are overcrowded. Teacher to student ratio 1:40 on average.	FNBC 1990 requires classroom occupancy to have 2 sqm per person. Based on that, the required roll per classroom was calculated.	- 11/14 classrooms were accommodating more roll than required. - Given the recommended sizing (1.5m ²), about 7 extra classrooms are required to address overcrowding in school.
Water Sanitation Hygiene (WASH) facilities	Toilet to Student Ratio Girls (11 WC) – 1:24 Boys (4 WC) – 1:75 General use Taps to Student Ratio Students (16 taps) – 1:38 1no. 5000L tank connected to WC flush system. Menstrual Hygiene kit available at admin office. Bins provided in Girls toilet. Wash tub present. No cloth line.	Toilet to Student Ratio Girls – 1:30 Boys – 1:20 General use Taps to Student Ratio Students – 60:1 Current student ratio used is respective of 2024 enrolment numbers. Menstrual Hygiene kit to be present in every female washroom block.	Based on current and expected increase in student roll: Girls to have extra 4no. WC cubicles, 2no. shower cubicles, 2no. taps. Boys to have extra 4no. WC cubicles, 2no. shower cubicles, 2no. taps. Junior grade toilet seats to be lower than standard. Clothes drying zone required.
Disaster Resilience Assessment	School building structures are resilient to natural disasters and have safety systems in place. Designated evacuation centre during disaster. Concrete rigid structure with hurricane mesh to all windows. Emergency route signs present on walls.	Fiji Building Code 1990. Requirement is that roof cladding be free of rust and fastened securely with type 17 cyclonic screws with neoprene washers.	No access to view roof cladding condition. No access to view roof framing tie down connections.
Accessibility Assessment	Classroom access door 1.2m clear wide. No grab rails along corridor. No ramp for corridor access and toilets. No accessible toilet. Current state all classrooms are overcrowded. Handrails present only for first floor corridor and steps.	The following are requirements from Fiji Disabled People's Federation Access Audit Tool: Ramps required wherever elevation with minimum 1:8 maximum 1:20 Walkway clearance handrails to be 0.76m to 0.9m. Doors and Door size minimum 0.9m. Steps clearance required of 1.2m and tread width of	Thorough upgrading of school amenities required to cater for disable students. No disable student enrolled.

		minimum 310mm. (National Building Code Table D2.1)	
--	--	--	--

8) RECOMMENDATIONS

In order to comply with the FNBC, the school will require the following:

- **Classrooms:** School intake of students have increased over the years as the population in the Housing Estate around the School have increased. School management converted its Computer Lab into Year 03 classroom. It is highly recommended for Ministry to construct new 4no. classroom block to cater for current overcrowding and expected future increase in student roll based on School's prime location.
- **WASH Facilities:** It is highly recommended for Ministry to construct a new Ablution Block with Boys having 4no. new water closets, 2no. shower cubicles and 2no. hand basins. Girls to have new 4no. water closets, 2no. shower cubicles and 2no. hand basins.
- **NFA Compliance:** School will require 4no. Class C fire extinguishers placed at strategic locations for both Blocks and Admin office. A new 50m long fire hose reel to be located on the outside face of current ECE room. There is no lab room or workshop in school.
- **Education Grant:** There is no student admittance fees collected by the school. Routine maintenance of school amenities depended on Free Education Grant given by the Ministry. Due to irregular intervals at which Grant is received, school operation is affected. Grant when received is used for infrastructure maintenance such as painting, roof repair, fence repair, windows and door repair, student desks and chair repair or replacement, maintenance staff pay, utility bills and office stationaries such as paper rims and printer inks. Grant is also used for Girls hygiene kit and toilet supply. All capital projects are funded by Arya Pratinidhi Sabha of Fiji such as recently constructed block wall fence and any Sports activities.
- **Accessibility:** Prioritize building accessibility features, such as ramps and handrails, to ensure compliance with standards. These features are vital for providing all students, including those with disabilities, with equal access to the school's facilities.

9) COMPLIANCE

Upon inspecting the school, the following conclusions were drawn:

- **MEHA Compliance:** School requires new classroom block. Average student to teacher ratio 1:40.
- **WASH Facilities:** School requires new ablution block to cater for both Girls and Boys.
- **Land Availability:** Ample land for additional classroom block and ablution block behind Block 01.
- **NFA Compliance:** School requires fire fighting accessories.
- **WAF Compliance:** Drinking water supply connected to WAF main.
- **FNBC Compliance:** Roof framing tie down connections to be assessed.
- **NDMO Compliance:** Designated assembly area and safety signs clearly visible.
- **EFL Compliance:** Power supply connected to EFL mains along Grantham Road.
- **DISABILITY Accessibility:** Classrooms and toilet blocks are not user friendly for disable students.

10) APPENDIX

Annex A - Site Inspection Report

Annex B – Excel Scoring Sheet

Annex C – Land Available for Expansion

Appendix A - Site Inspection Report

INFRASTRUCTURE ASSESSMENT AUDIT FOR SUVA – NAUSORI URBAN SCHOOL

PT. VISHNU DEO MEMORIAL PRIMARY SCHOOL (2379) SITE INSPECTION REPORT



TABLE OF CONTENTS

List of Tables	3
List of Abbreviations.....	3
1) SCHOOL BACKGROUND	4
2) SCHOOL SITE PLAN (DRONE IMAGERY OF SCHOOL).....	7
3) VISUAL INSPECTION RESULTS – BLOCK 01	8
4) PHOTOGRAPHIC REPORT – BLOCK 01.....	9
5) VISUAL INSPECTION RESULTS – BLOCK 02	10
6) PHOTOGRAPHIC REPORT – BLOCK 02.....	11
7) VISUAL INSPECTION RESULTS – TOILET BLOCK GIRLS AND BOYS.....	12
8) PHOTOGRAPHIC REPORT – TOILET BLOCK GIRLS AND BOYS.....	13
9) BUILDING AND TOILET BLOCKS ACCESS INFORMATION FOR DISABILITY AUDITS	14

List of Tables

Table 1: SCHOOL DETAILS

Table 2: SCHOOL ENROLMENT FIGURES

Table 3: 2024 CLASSROOM ENROLLMENT DETAILS

List of Abbreviations

NRWM	NRW MACALLAN (FIJI) PTE LTD
MOE	MINISTRY OF EDUCATION
TT	TETRA TECH INTERNATIONAL DEVELOPMENT PTY LTD
DFAT	DEPARTMENT OF FOREIGN AFFAIRS AND TRADE (AUSTRALIA)
FEG	FREE EDUCATION GRANT
OHS	OCCUPATIONAL HEALTH AND
NFA	NATIONAL FIRE AUTHORITY
WAF	WATER AUTHORITY OF FIJI
NBC	NATIONAL BUILDING CODE
NDMO	NATIONAL DISASTER MANAGEMENT OFFICE
EFL	ENERGY FIJI LIMITED

1) SCHOOL BACKGROUND

School was established in year 1970 and managed by Arya Pratinidhi Sabha of Fiji. School caters for Year 01 to Year 08 students and has a Kindergarden class too. School consists of students from surrounding informal settlements such as Jittu Estate and Nanuku. Majority of students are from low socio-economic families. The school serves one of the poorest sectors of Housing Estate in Suva.

Apart from being multiracial, the school has one of the largest itaukei student population approx. 75%. School gets funding from Hindu faith-based Sabha and Annual Free Education Grant from the Education Ministry. Grant is utilized for school building maintenance such as painting, roof repair, fence repair, windows and doors repair, student desks and chairs repair or replacement, maintenance staff pay, utility bills and office stationaries such as paper for tests and ink for printers. No school fees collected by management.

Table 1: SCHOOL DETAILS

NAME OF SCHOOL	Pt Vishnu Deo Memorial Primary School
SCHOOL REGISTRATION NUMBER	2379
SCHOOL LOCATION	Grantham Road, Raiwaqa
SCHOOL TYPE	Primary
FEEDER SCHOOL	-
DATE OF INSPECTION	07 th June 2024
MILESTONE	(13 / 86 SCHOOLS)
INSPECTED BY (TEAM 4)	Aleksio Manoa
	Freddy Turaga
	Suraj Raghunath

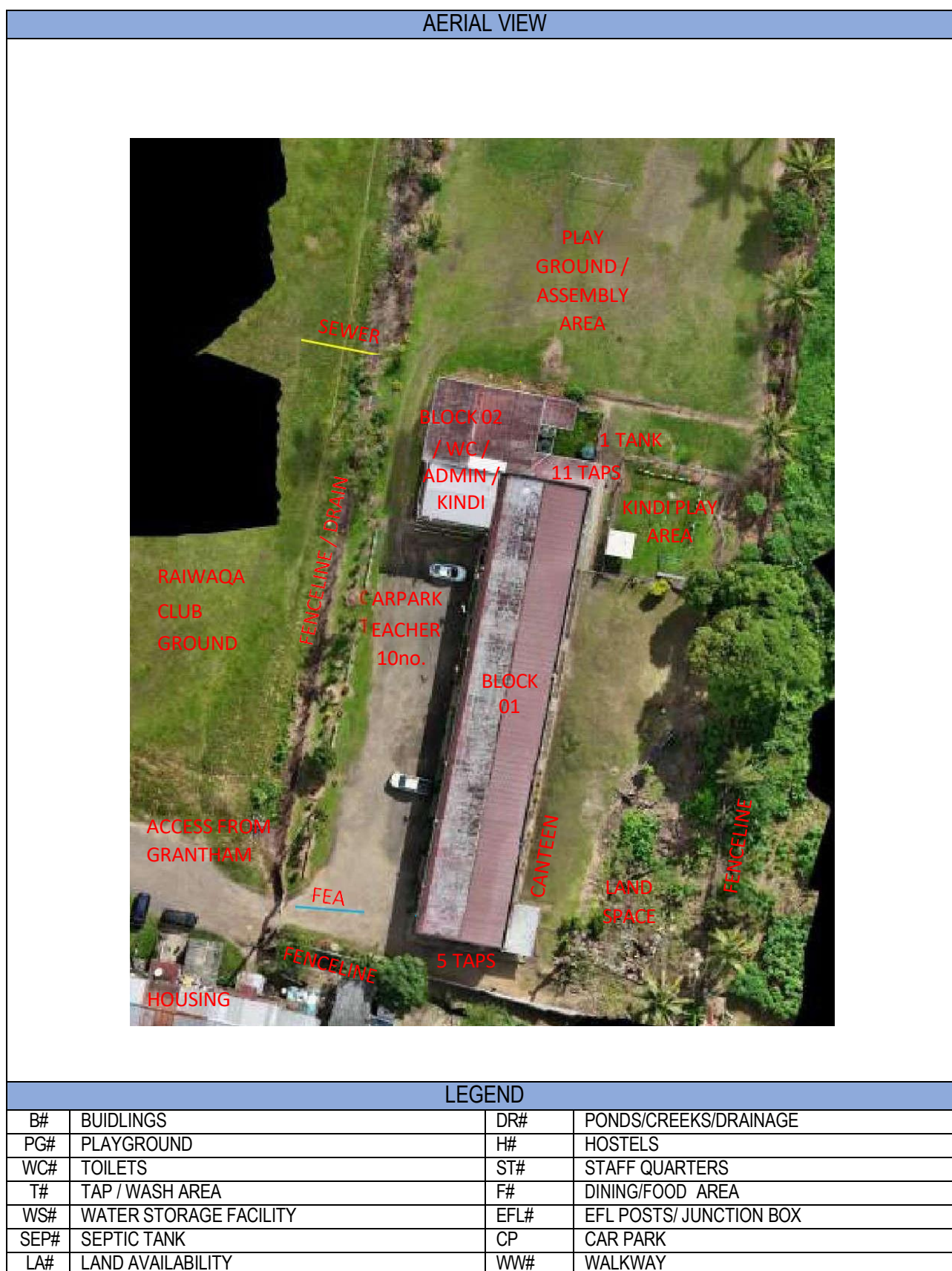
Table 2: SCHOOL ENROLMENT FIGURES

Year of Enrolment	Number of Students			Students with Disability	Number of Teachers			Comments
	Male	Female	Total		Male	Female	Total	
2024	303	258	561	0	2	12	14	<ul style="list-style-type: none"> 14no. Class rooms 1no. ECE room Student to stream average ratio is 40 :1 for 2024 school calendar. WASH ratio Boys WC 75:1 Girls WC 24:1 Taps 40:1 Evacuation Centre designated by NDMO.
2023	304	279	583	0	2	12	14	
2022			469				13	
2021			424				13	
2020			444				13	
2019			450				13	

Table 3: 2024 CLASSROOM ENROLLMENT DETAILS

[illegible]

2) SCHOOL SITE PLAN (DRONE IMAGERY OF SCHOOL)



3) VISUAL INSPECTION RESULTS – BLOCK 01

Building Index		BLOCK 01				Year built: 1970 (Age: over 50 years old)	
Type:	Ground Floor: 6no. Classrooms, Canteen back of stairway. First Floor : 6no. Classrooms, Storage room above Canteen					No. of Levels: 2	
Dimensions		Length (m): 50m	Width (m): 10.5m			Height (m): 6.2m	
Existing State of Building							
REF. No.	Building Component	Good ¹	Fair ²	Poor ³	Structure Type ⁴	Comments	
1	Roof Lining	x			Metal cladding	Roof to receive new paint.	
2	Roof Structure	x			Timber frame	Connections concealed.	
3	Walls	x			Concrete	No signs of crack. Paint finish.	
4	Columns	x			Concrete	No signs of crack. Paint finish.	
5	Beams	x			Concrete	No signs of crack. Paint finish.	
6	Floor	x			Concrete	No signs of crack. Tiled finish.	
7	Handrails	x			Metal pipes	Safe height. No damage. Paint finish.	
8	Walkway(s)					No walkway. Corridor links to Block 02.	
9	Services – water supply					Tapped off WAF main Grantham Road	
10	Available taps for general use (excl. taps in toilets)					16 taps	Student – tap ratio = 40 : 1
11	Services – electricity					Connected off the gridline Grantham road.	
12	Services – communication					PA system covers whole block. Several safety signs on display.	
13	Drainage					Stormwater divert into nearby drain. Playground boggy. Gov drains need cleaning.	

Comments

- Block 01 constructed out of concrete beams and columns with slab on ground and suspended floor slab for first floor. Block walls for external load bearing and folding timber partition walls. Doors and windows present on lengthwise of the structure. Gable roof with metal cladding and timber framed roof members. Staircase present both ends with hand rails for first floor. Natural light and ventilation satisfactory. Classrooms well maintained by school committee.
- Block 01 not friendly for disable students – entry points step up / down and congested classrooms.
- Block 01 walkway ceiling at some locations requires repair works, main roof to receive new paint and gutters to be cleaned.
- Fencing to be repaired or replaced. School surrounded by Raiwaqa Sports club and Housing estate. People reported to jump school fence to use school playground and taps and to use it as a short cut route to squatter settlements behind school. School committee funded and constructed new wall fence to block view of residents drinking and fighting in Housing estate.
- Block 01 requires new fire extinguishers and fire hose reel.
- Refer to Table 03 on page 06 for classroom dimension and overcrowding details.

¹ Good - No additional works / intervention required

² Fair - Remedial works required – min CAT 3 standard

³ Poor - Demolition and replace with new - min CAT 4 standard

⁴ Type of structure - Timber/concrete/steel

4) PHOTOGRAPHIC REPORT – BLOCK 01

Client:	TETRA TECH INTERNATIONAL DEVELOPMENT (PTY) LTD	School Name:	PT. VISHNU DEO MEMORIAL PRIMARY SCHOOL
Project:	INFRASTRUCTURE PLAN FOR SUVA – NAUSORI SCHOOLS	Building Index:	BLOCK 01



01. CLASSROOM FRONT CORRIDOR & CARPARK



02. TAPS ON SIDE WALL, FENCE SEPARATING HOUSING



03. CLASSROOM BACK CORRIDOR & LAND SPACE



04. SECURED DOORS & WINDOWS, SIGNS ALONG CORRIDOR



05. CORRIDOR MARKING, STAIRWELL & FIRST FLOOR SAFETY RAIL.



06. TYP CLASSROOM STRUCTURE GROUND & FIRST FLOOR

5) VISUAL INSPECTION RESULTS – BLOCK 02

Building Index		BLOCK 02				Year built: 1970 (Age: over 50 years old) Year built: 2006 (CLASSROOM & TOILETS)	
Type:	Ground Floor: Girls Toilet, Boys Toilet, Teacher Male WC, Teacher Female WC, ECE Classroom, Library, 1no. Classroom First Floor : Office Admin, Staffroom, Teacher WC, 1no. Classroom, Culture room, Sick bay					No. of Levels: 2	
Dimensions		Length (m): 20m		Width (m): 15m		Height (m): 6.2m	
Existing State of Building							
REF. No.	Building Component	Good ⁵	Fair ⁶	Poor ⁷	Structure Type ⁸	Comments	
1	Roof Lining	x			Metal cladding	Roof to receive new paint. Roof leak over admin.	
2	Roof Structure	x			Timber frame	Connections concealed.	
3	Walls	x			Concrete	No signs of crack. Paint finish.	
4	Columns	x			Concrete	No signs of crack. Paint finish.	
5	Beams	x			Concrete	No signs of crack. Paint finish.	
6	Floor	x			Concrete	No signs of crack. Tiled finish.	
7	Handrails				Metal pipes	Safe height. No damage. Paint finish.	
8	Walkway(s)					No walkway. Corridor links to Block 01.	
9	Services – water supply					Tapped off WAF main Grantham Road	
10	Available taps for general use (excl. taps in toilets)					16 taps	Student – tap ratio = 40 : 1
11	Services – electricity					Connected off the gridline Grantham road.	
12	Services – communication					PA system covers whole block. Several safety signs on display.	
13	Drainage					Stormwater divert into nearby drain. Playground boggy. Gov drains need cleaning.	
Comments <ul style="list-style-type: none">Block 02 constructed out of concrete beams and columns with slab on ground and suspended floor slab for first floor. Block walls for both external & internal load bearing. Doors and windows present on all sides of the structure. Gable roof with metal cladding and timber framed roof members. Corridor links to Block 01. Natural light and ventilation satisfactory.There is no walkway from school bus drop off point on Grantham road to school compound. Approx. 50m. Road access do not belong to school.Refer to Table 03 on page 06 for classroom dimension and overcrowding details.							
Recommendations <ul style="list-style-type: none">Block 02 main roof to receive new paint and gutters to be cleaned.Roof leak over admin office space needs to be addressed.Block 02 requires new fire extinguishers and fire hose reel.							

⁵ Good - No additional works / intervention required

⁶ Fair - Remedial works required – min CAT 3 standard

⁷ Poor - Demolition and replace with new - min CAT 4 standard

⁸ Type of structure - Timber/concrete/steel

6) PHOTOGRAPHIC REPORT – BLOCK 02

Client:	TETRA TECH INTERNATIONAL DEVELOPMENT (PTY) LTD	School Name:	PT. VISHNU DEO MEMORIAL PRIMARY SCHOOL
Project:	INFRASTRUCTURE PLAN FOR SUVA – NAUSORI SCHOOLS	Building Index:	BLOCK 02



01. GROUND FL ECE ROOM, FIRST FL ADMIN OFFICE



02. GROUND FL TOILETS, FIRST FL CLASSROOM



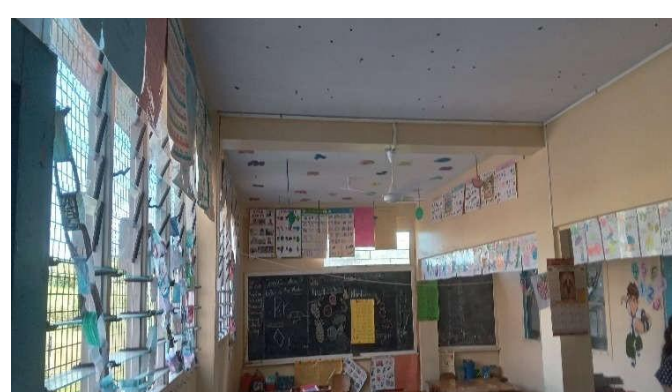
03. CORRIDOR LINK TO BLOCK 01



04. TAPS ON SIDE WALL, 1no. WATER TANK



05. SECURED KINDI PLAY AREA BEHIND BLOCK 02.



06. ECE ROOM INTERIOR, NATURAL LIGHT & VENTILATION.

7) VISUAL INSPECTION RESULTS – TOILET BLOCK GIRLS AND BOYS

Building Index	BLOCK 02 GROUND FLOOR PART OF							
Type:	Girls Toilet: 11no. water closet, 1no. shower, 2no. taps Boys toilet: 4no. water closet, 2no. showers, 2no. taps, 1no. urinal						No. of Levels: 1	
Dimensions	Length (m): 9m			Width (m): 7.6m			Height (m): 3m	
Existing State of Building								
REF. No.	Building Component	Good 9	Fair 10	Poor 11	Structure Type 12	Count 13	Comments	
1	Toilet Bays – male	x			Concrete	4		
2	Toilet Bays – female	x			Concrete	11		
3	Toilet Partition between boys and girls.	x			Concrete		Block wall full height	
4	Shower bay					3	No separate cubicle for showers.	
5	Toilet Bays – accessible						Not friendly for disable students.	
6	Entry to toilet building						1no. swing door	
7	Exit to toilet building						1no. swing door	
8	Menstrual Hygiene facilities						Kit present in Admin office.	
9	Students to WASH ratio	Toilet taps:			Male (303)	150 :1	Female (258)	130 : 1

Comments

- Toilet units for both girls and boys located at ground floor of Block 02. First floor students access toilets and taps on ground floor. Teachers share 1no. WC on first floor. Ground floor 1no. Teacher Female water closet, 1no. Teacher Male water closet.
- Each student water closet cubicle measured to be 1.6m long by 1.0m wide. All water closets are operational and well maintained by School committee. All cubicles have swing timber doors on hinges. Shower heads provided inside water closet cubicle. Whole floor provided with tiles. Only cubicles have mid height wall tiles.
- Wash tub and space for drying of cloths available.

Recommendations

- Separate shower cubicles required for both girls and boys toilet.
- Some cubicle doors to have locking device readjusted or replaced for both girls and boys toilets.
- School requires a new ablution block and hand wash points to cater for all students. School management prepared a strategy to stagger recess and lunch times for different Grades to avoid overcrowding at toilets and taps. Classrooms on first floor have wash buckets and encourage students to have water bottles since all taps are located on ground floor. Land available for new development.

⁹ Good - No additional works / intervention required

¹⁰ Fair - Remedial works required – min CAT 3 standard

¹¹ Poor - Demolition and replace with new - min CAT 4 standard

¹² Type of structure - Timber/concrete/steel

¹³ Count - Used for identifying number of toilet bays and menstrual hygiene facilities

8) PHOTOGRAPHIC REPORT – TOILET BLOCK GIRLS AND BOYS

Client:	TETRA TECH INTERNATIONAL DEVELOPMENT (PTY) LTD	School Name:	PT. VISHNU DEO MEMORIAL PRIMARY SCHOOL
Project:	INFRASTRUCTURE PLAN FOR SUVA – NAUSORI SCHOOLS	Building Index:	BLOCK 02



01. BOYS TOILET HAND WASH POINT.



02. BOYS TOILET URINAL.



03. WATER CLOSET UNIT TYPICAL, SHOWER HEAD



04. GIRLS TOILET HAND WASH POINT.

9) BUILDING AND TOILET BLOCKS ACCESS INFORMATION FOR DISABILITY AUDITS

Building Index	Type	Length (m):	Width (m) :	Height (m) :
Block 01	Ground Floor: 6no. Classrooms, Canteen back of stairway. First Floor : 6no. Classrooms, Storage room above Canteen	50	10.5	6.2
Block 02	Ground Floor: Girls Toilet, Boys Toilet, Teacher Male WC, Teacher Female WC, ECE Classroom, Library, 1no. Classroom First Floor : Office Admin, Staffroom, Teacher WC, 1no. Classroom, Culture room, Sick bay	20	15	6.2

Existing State of Building

REF. No.	Building Component	Good ¹⁴	Fair ¹⁵	Poor ¹⁶	Structure Type ¹⁷	Dimensions	Comments
1	Ramps						None.
2	Walkway clearance space					2.4m wide	
3	Handrails				Metal	1.0m high	
	Doors and Door Size (typical)				Timber	1.2m wide	
4	Stairway				Concrete	2.4m wide	

Comments

- All Classrooms have step up / step down at entry point. Ground floor for Block 01 & Block 02 raised above ground by 300mm. Steps provided. No ramps at point of entry and at hand wash points.
- All rooms used as classrooms except for ECE have two entry / exit points. Clear opening of each door is 1.2m.
- Both girls and boys toilet have step up / step down at entry point. Clear opening of each cubicle door is 900mm. Taps for hand wash inside the toilet block is 1.0m high from floor. No ramps at point of entry.
- Toilet facilities are not user friendly for disable students.
- Safety hand railing provided for first floor corridor and stairwell. Each step is 1.2m wide with approx. 160mm high riser.

¹⁴ Good - No additional works / intervention required

¹⁵ Fair - Remedial works required – min CAT 3 standard

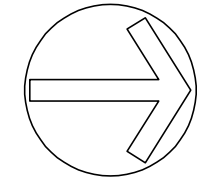
¹⁶ Poor - Demolition and replace with new - min CAT 4 standard

¹⁷ Type of structure - Timber/concrete/steel

Appendix B – Excel Scoring Sheet

WEIGHTED CRITERIA		
PART A - CLASSROOM OVERCROWDING (40%)		
1	Classrooms facilitating students beyond room capacity, determined through number of students per classroom and classroom size	
	Poor - most to all classrooms are accommodating students above capacity.	32 to 40
	Criteria Item Score	32.0
PART B - WASH FACILITIES (20%)		
2	WASH- Student ratio based on the Fiji National Building Code (FNBC) Infrastructure Standards (10%)	
	Poor - WASH-Student ratio for school toilet blocks falls below the ratio in the standard specified by FNBC.	8 to 10
2.1	Quality of facilities and current condition such as functionality and maintenance (10%)	
	Good - generally school toilet facilities are maintained well with minimal disturbances from the physical infrastructure to the end users.	0 to 5.9
	Criteria Item Score	15.0
PART C - CONDITION OF INFRASTRUCTURE (20%)		
3	Building structure and condition of walls, floors, ceilings, overall structural integrity (10%)	
	Good - most building structures are in good condition, however some may need repairs to improve structural integrity.	0 to 5.9
3.1	Maintenance and assessment of the upkeep of facilities including painting and repairs (10%)	
	Good - generally school facilities are maintained well with minimal disturbances from the physical infrastructure to the end users.	0 to 5.9
	Criteria Item Score	5.0
PART D - DISABILITY ACCESSIBILITY (10%)		
4	Accessibility features such as the presence of existing ramps, handrails, accessible toilets etc	
	Poor - School buildings and facilities do not have accessibility features.	8 to 10
	Criteria Item Score	10.0
PART E - DISASTER RESILIENCE (10%)		
5	Presence and quality of measures for disaster resilience of buildings including structural measures, cyclone shutters and fire safety systems	
	Good - most or all school buildings structures are resilient to natural disasters and have partial safety systems in place. More systems or structural intervention would need to be implemented	0 to 5.9
	Criteria Item Score	0.0
TOTAL CRITERIA SCORE		62.0

Appendix C – Land Available for Expansion



BLOCK 01
EXISTING TWO LEVEL STRUCTURE,
GROUND FLOOR HAVE CANTEEN, GRADES 101,
102, 201, 301, 401, 501
FIRST FLOOR HAVE GRADES 502, 601, 602, 701,
702, 801.

BLOCK 02
EXISTING TWO LEVEL STRUCTURE,
GROUND FLOOR HAVE ECE ROOM, MALE
STAFF TOILET, FEMALE STAFF TOILET, GIRLS
TOILET & BOYS TOILET.
FIRST FLOOR HAVE ADMIN OFFICE, STAFF
TOILET, CULTURE ROOM, GRADES 302, 802.



NRW MACALLAN (FIJI) LTD
CONSULTING ENGINEERS

CIVIL, STRUCTURAL, ELECTRICAL, MECHANICAL & PROJECT MANAGEMENT
79 RATU MARA ROAD, SAMABULA, SUVA.
P O BOX 1208, SUVA, PHONE: (679) 3313 388, FAX (679) 3302903
EMAIL: info@nrwmacallan.com.fj

SCHOOL NAME:

PT VISHNU DEO MEMORIAL
PRIMARY SCHOOL